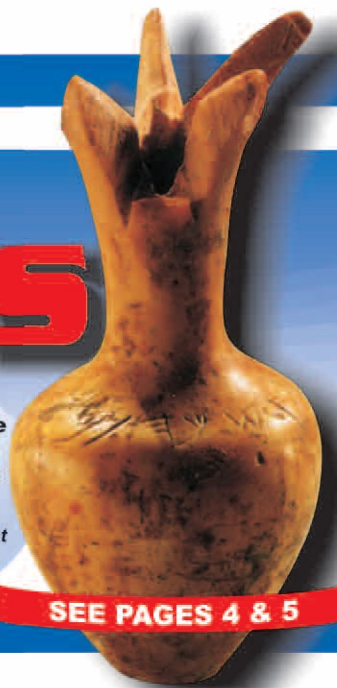


RONALD E. WYATT

Discovery News

"Truth shall spring
out of the earth"
- Psa 85:11

**Ivory
Pomegranate**
- originally from
King Solomon's
Temple
"...a sensational
discovery, of great
significance."



SEE PAGES 4 & 5

I N S I D E

BIBLICAL ARCHAEOLOGY DIGEST



Government confirms: "This is Noah's Ark"

Report from Dogubayazet, Eastern Turkey
The discovery of NOAH'S ARK

ON June 20, 1987, the Turkish Government established the new Noah's Ark National Park. This followed a Government commission which confirmed the 10 years of research work on the site by an American, Ronald Wyatt and his colleagues.

The site was first brought to attention in the late 1950s after high altitude aerial photographs revealed a boat-shaped structure in the mountains of the Ararat region.

Although the site was initially dismissed by some, Ron Wyatt spearheaded extensive investigations at the site and the surrounding area for nearly a decade.

Employing such methods as subsurface interface radar scanning, metal detection surveys, core-drilling, etc., the results were spectacular. Buried at an altitude of 2000 metres was the physical remains of a man-made structure, an enormous ship.

Wyatt's results led to serious interest by Turkish scientists and archaeologists, and ultimately a high-level Government commission was convened to consider all the evidence gathered.

After examining the data collected on the site, Professor Dr. Ekrem Akurgal, considered by many to be 'The Dean of Turkish Archaeologists', stated "... it is a ship, an ancient ship... It must be preserved..."



Noah's Ark - Confirmed after on-site research by Ron Wyatt (pictured) and Government scientists

The official conclusion was the site did indeed contain the remains of the legendary ark of Noah. As a result, the "Noah's Ark National Park" was established.

Naturally the conclusion of the Turkish Government has been resisted by many in academic circles, for the implications of this discovery are very far-reaching. However, even before the site has been fully excavated, the evidence is abundant, and consistently

points to this site as being the remains of the legendary Ark of Noah. As conditions permit and funding becomes available, the long-term goal of researchers is to house the site in order to conduct a full excavation.

Documentation is available, detailing the history of this discovery, and the results of the on-site research work that has been carried out in this remote part of Eastern Turkey.

See page 2 for further reports

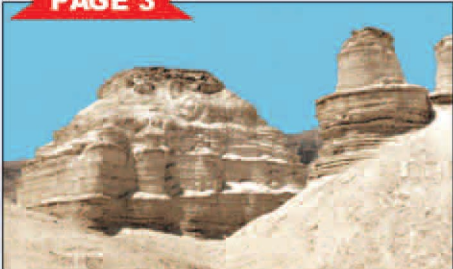
PAGE 2



LAMINATED WOOD USED IN NOAH'S ARK

Petrified laminated wood excavated from the site reveals amazing construction techniques

PAGE 3



FOUND: CITIES OF ASH

Recently rediscovered, the cities of Sodom & Gomorrah are literally 'brimming' with evidence

PAGE 6



SITE OF THE RED SEA CROSSING LOCATED

A graveyard of horse, human and chariot remains found on the sea-bed off the Sinai Peninsula

PAGE 7



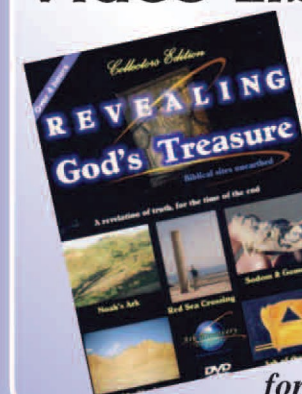
LOCATION OF REAL MOUNT SINAI FOUND

Stunning evidence discovered in a Saudi desert pinpoints the real location of Mount Sinai



Iron Lines - Colored tapes laid along metal detector readings show a regular pattern of iron, further confirmation that the site contains the remains of an enormous man-made structure

A Must-Have in Your Video Library



Over 4
hours of
video!

See
back
page
for details ➡